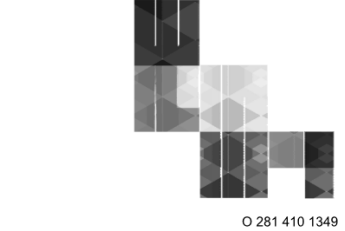


**DLD ENGINEERING**  
 18106 FIRST BEND DR.  
 CYPRESS, TX. 77433  
 O:832.422.9350

**ARCHITECT**



W SQUARE ARCHITECTS  
 281.410.1349  
 www.wsquarearchitects.com

**DESIGN ARCHITECT**  
 W SQUARE ARCHITECTS  
 3302 CANAL STREET, SUITE 36  
 HOUSTON, TX 77003  
 PHONE: (281) 410-1349

**GREATER HEIGHTS SCHOOL  
 HOUSTON, TEXAS**



08/26/2019

**TEXAS REGISTERED  
 ENGINEERING FIRM**

F-17306  
 THE INFORMATION DISCLOSED  
 HEREIN IS PROPRIETARY  
 WITH DLD ENGINEERING LLC.,  
 AND SHOULD NOT BE  
 USED, DUPLICATED OR  
 DISCLOSED WITHOUT ITS  
 EXPRESS  
 WRITTEN PERMISSION.

**UNAUTHORIZED USE OR COPYING  
 OF THIS  
 OR ANY CONTENTS HEREOF IS  
 STRICTLY FORBIDDEN**

PROJECT: 002-1029.19.00  
 DRAWN BY: PM  
 CHECKED BY: SS  
 DRAWING SCALE: AS NOTED

REVISION NO.	DESCRIPTION	DATE
1	ADDENDUM 2	08/26/2019

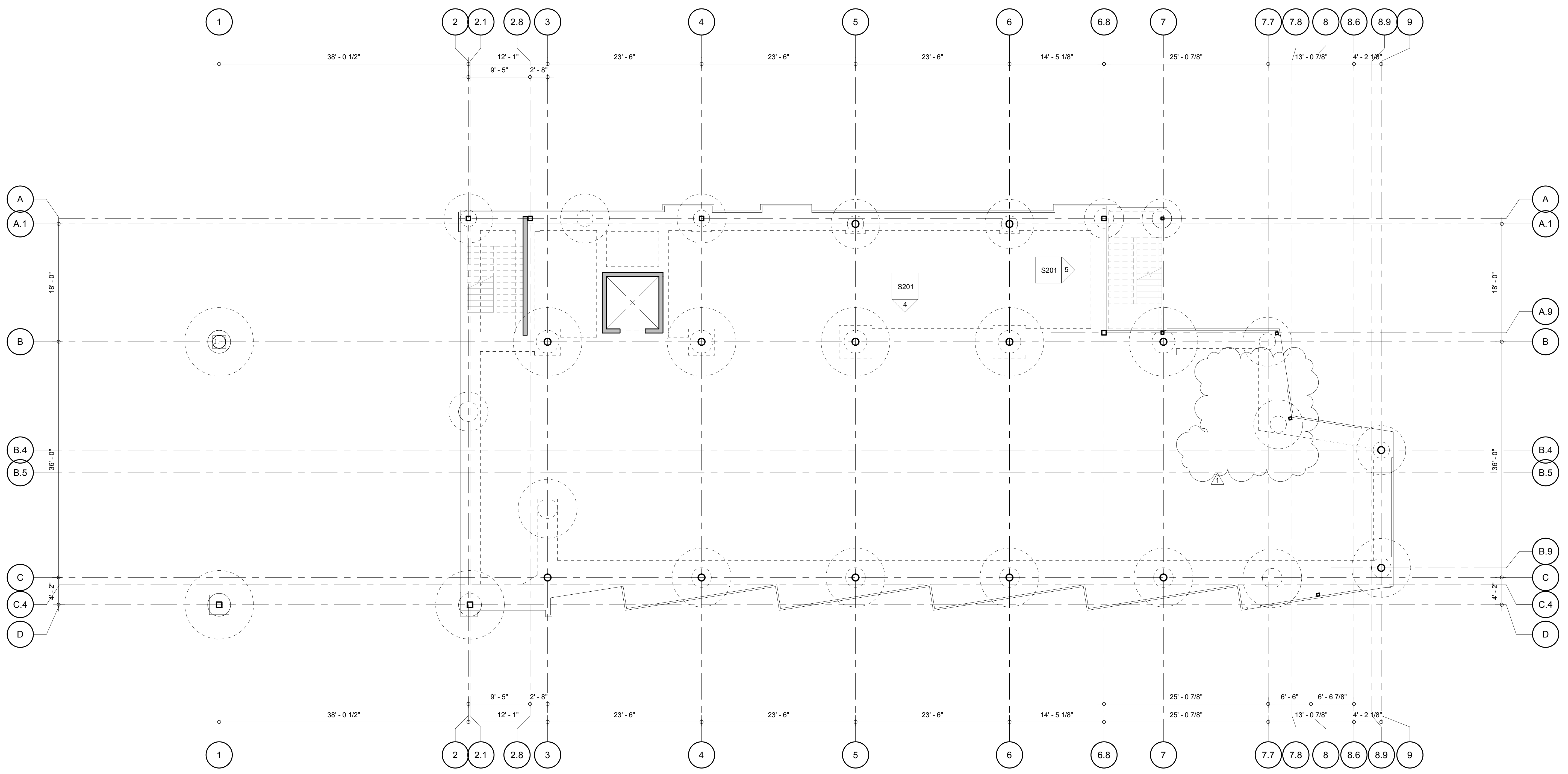
DATE  
**08.26.2019**

ISSUE  
**PERMIT SET**

BUILDING TITLE  
**GH SCHOOL  
 4724 N MAIN STREET**

SHEET TITLE  
**OVERALL  
 FOUNDATION PLAN**

SHEET NO.  
**S1.00**



**1 OVERALL LEVEL 1 FLOOR PLAN**  
 1/8" = 1'-0"