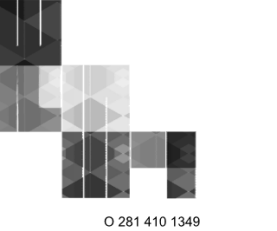


DLD ENGINEERING
 18106 FIRST BEND DR.
 CYPRESS, TX. 77433
 O.832.422.9350

ARCHITECT



W SQUARED ARCHITECTS
 0281 410 1349
 www.w-squared.com

DESIGN ARCHITECT
 W SQUARE ARCHITECTS
 3302 CANAL STREET, SUITE 36
 HOUSTON, TX 77003
 PHONE: (281) 410-1349

GREATER HEIGHTS SCHOOL
 HOUSTON, TEXAS



08/26/2019

TEXAS REGISTERED ENGINEERING FIRM
 F-17306

THE INFORMATION DISCLOSED HEREIN IS PROPRIETARY WITH DLD ENGINEERING LLC., AND SHOULD NOT BE USED, DUPLICATED OR DISCLOSED WITHOUT ITS EXPRESS WRITTEN PERMISSION.

UNAUTHORIZED USE OR COPYING OF THIS OR ANY CONTENTS HEREOF IS STRICTLY FORBIDDEN

PROJECT: 002-1029.19.00
 DRAWN BY: PM
 CHECKED BY: SS
 DRAWING SCALE: AS NOTED

REVISION NO.	DESCRIPTION	DATE
1	ADDENDUM 2	08/26/2019

DATE **08.26.2019**

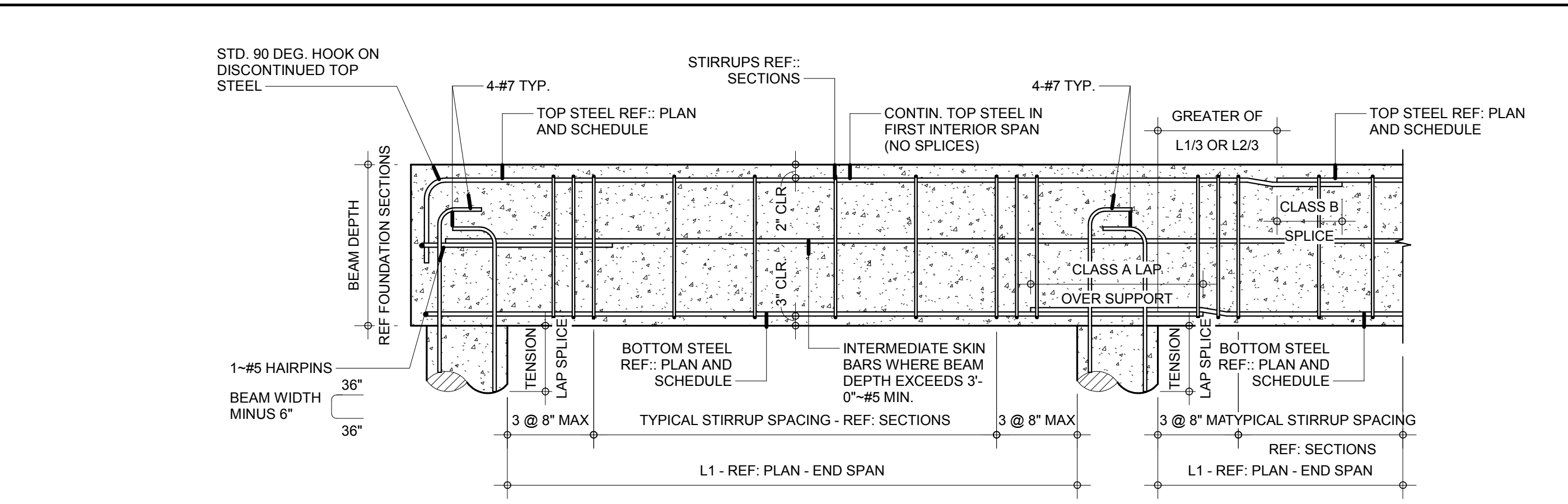
ISSUE **PERMIT SET**

BUILDING TITLE **GH SCHOOL**
4724 N MAIN STREET

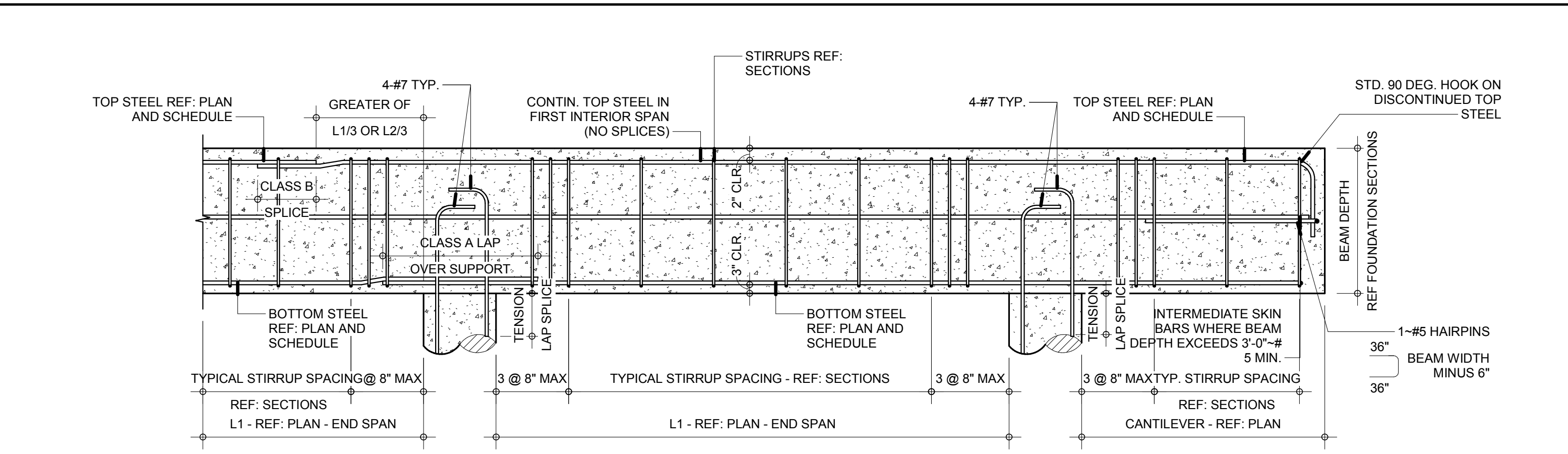
SHEET TITLE **FOUNDATION DETAILS**

SHEET NO.

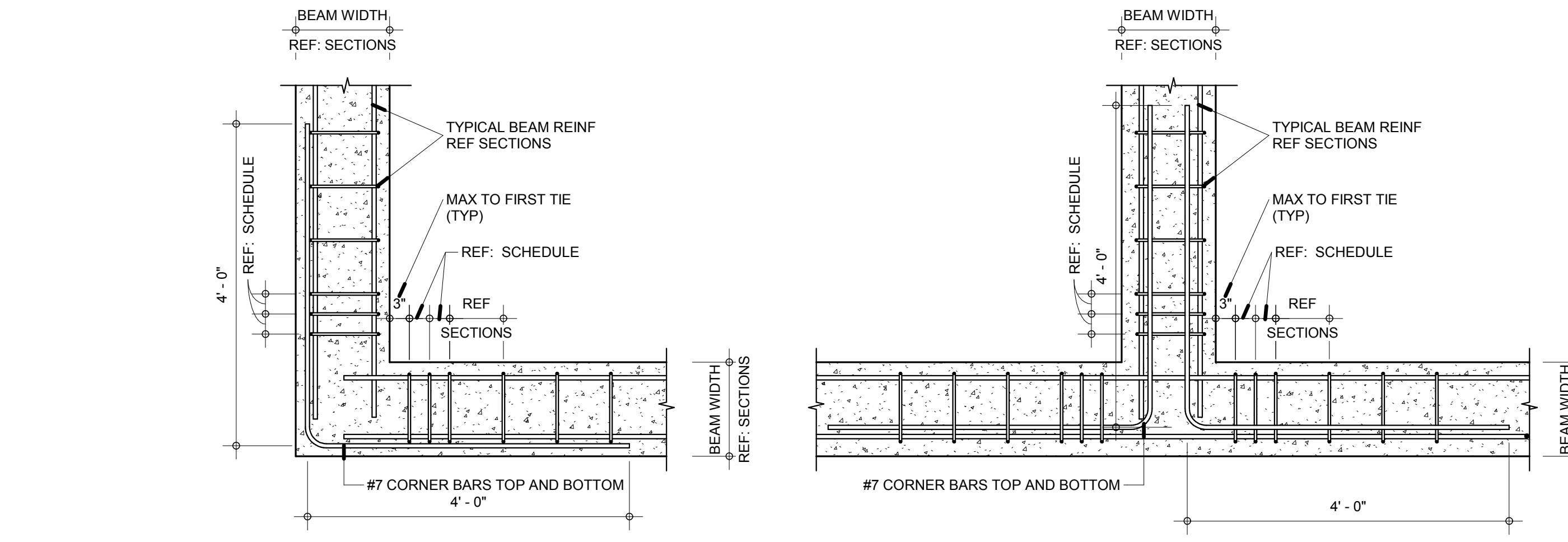
S102



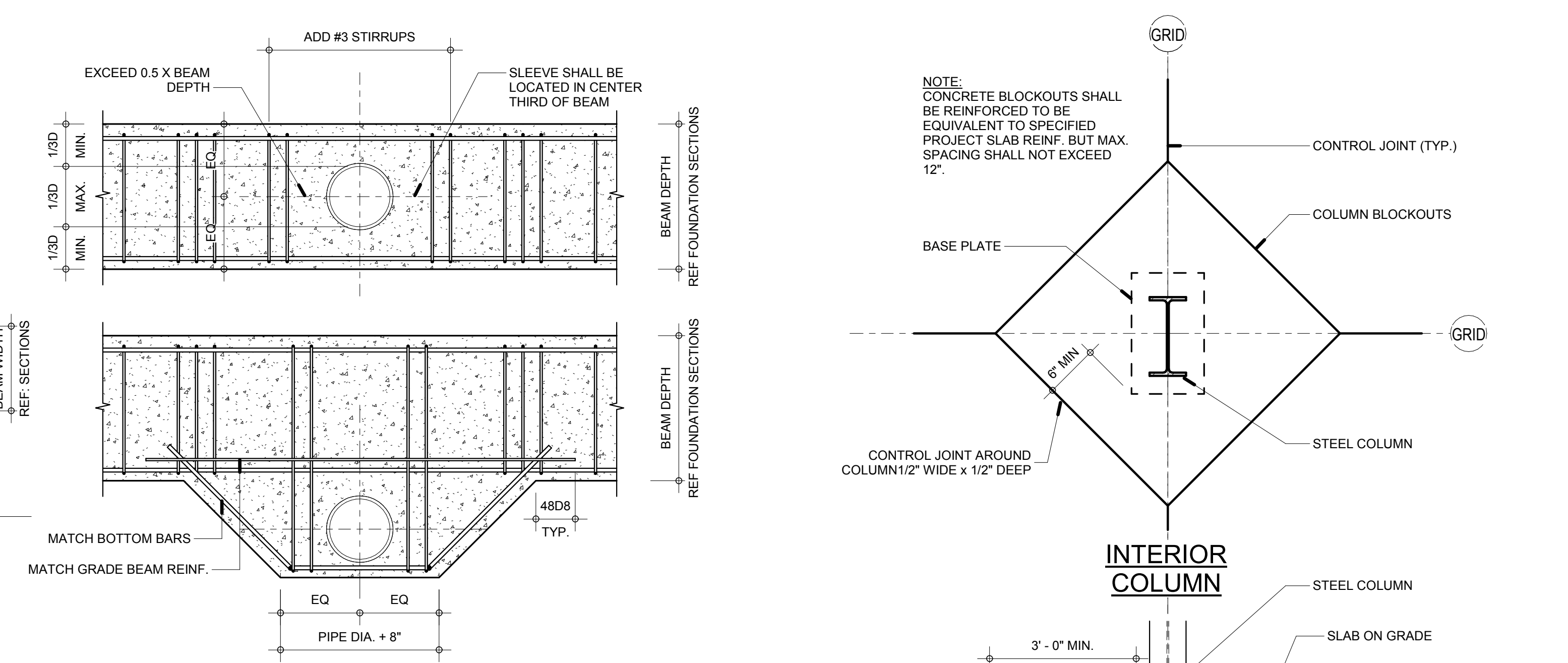
13 TYPICAL SIMPLE SPAN GRADE BEAM (GB) DIAGRAM
 3/4" = 1'-0"



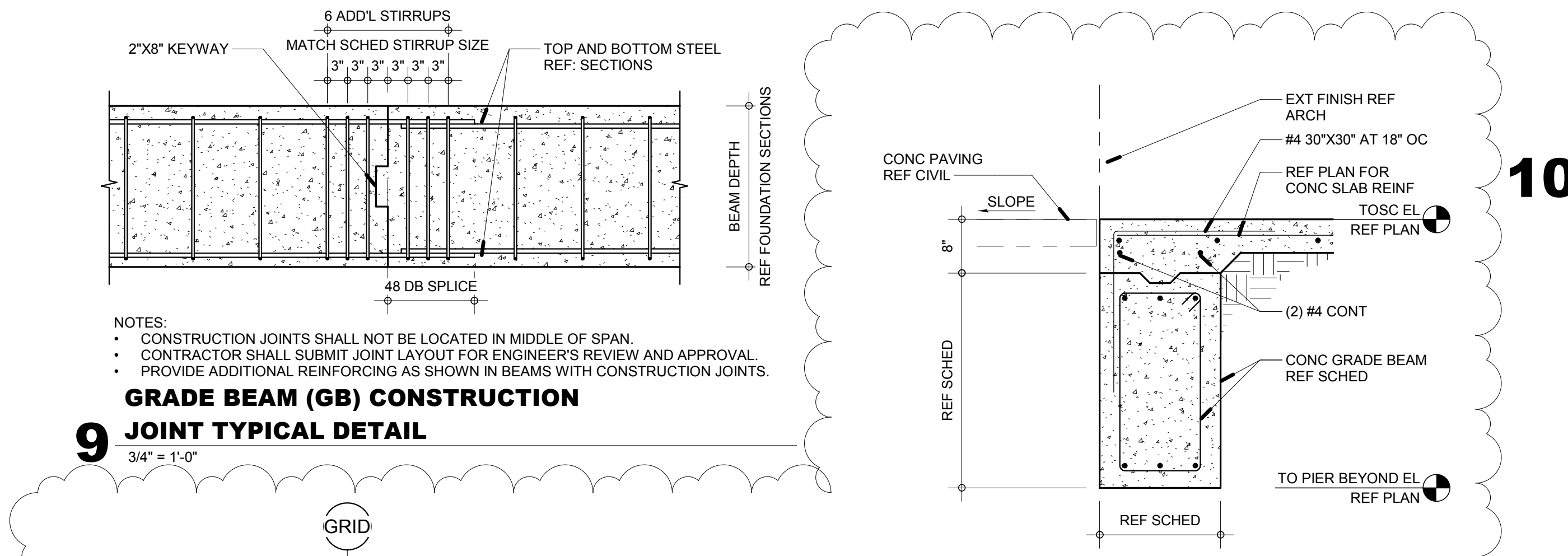
12 TYPICAL CANTILEVER GRADE BEAM (GB) DIAGRAM
 3/4" = 1'-0"



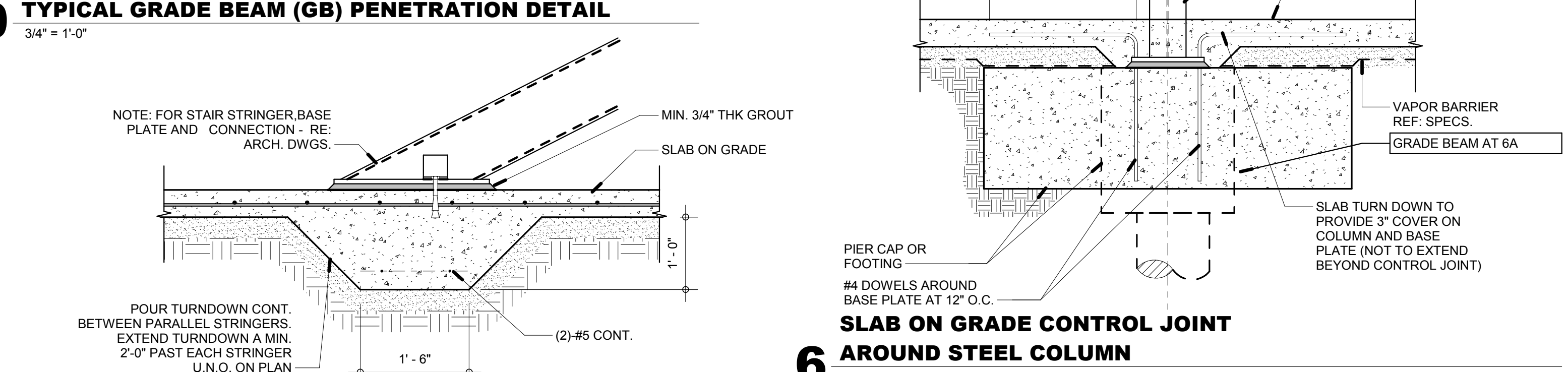
11 TYPICAL GRADE BEAM (GB) TEE AND CORNER DETAIL
 3/4" = 1'-0"



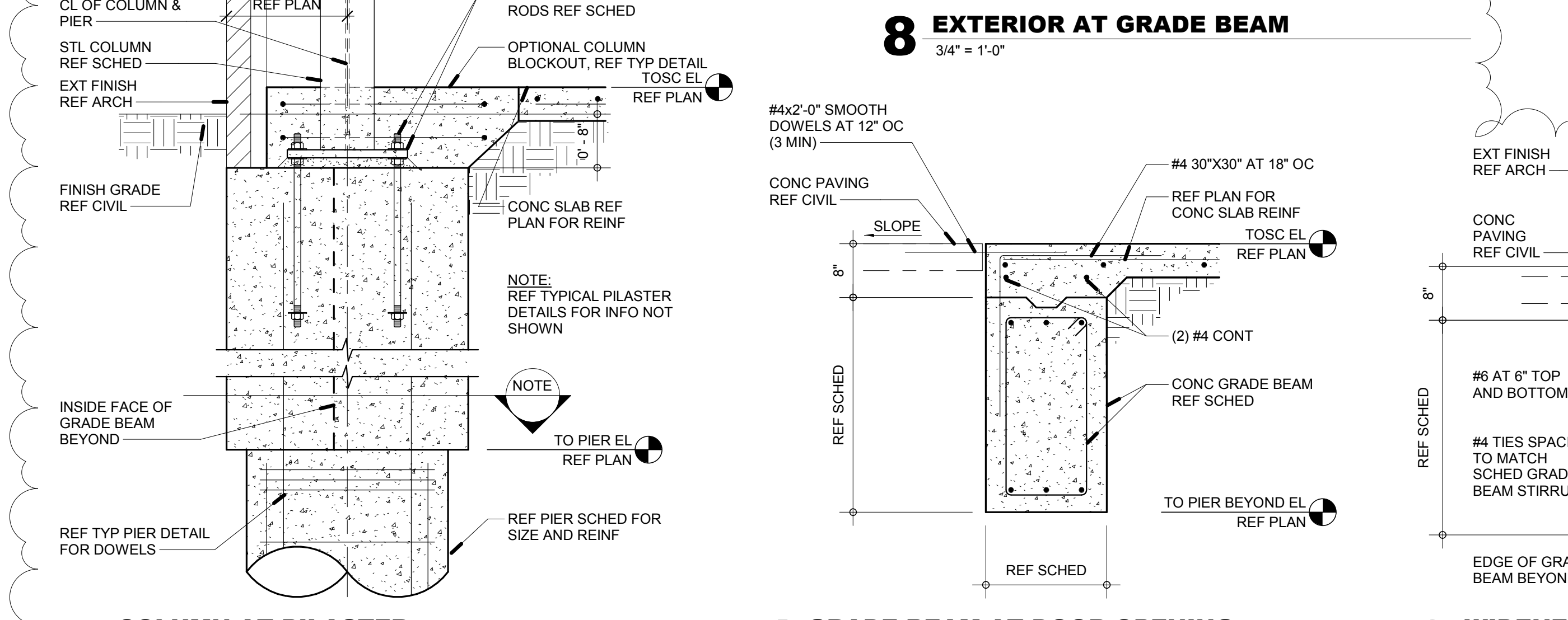
10 TYPICAL GRADE BEAM (GB) PENETRATION DETAIL
 3/4" = 1'-0"



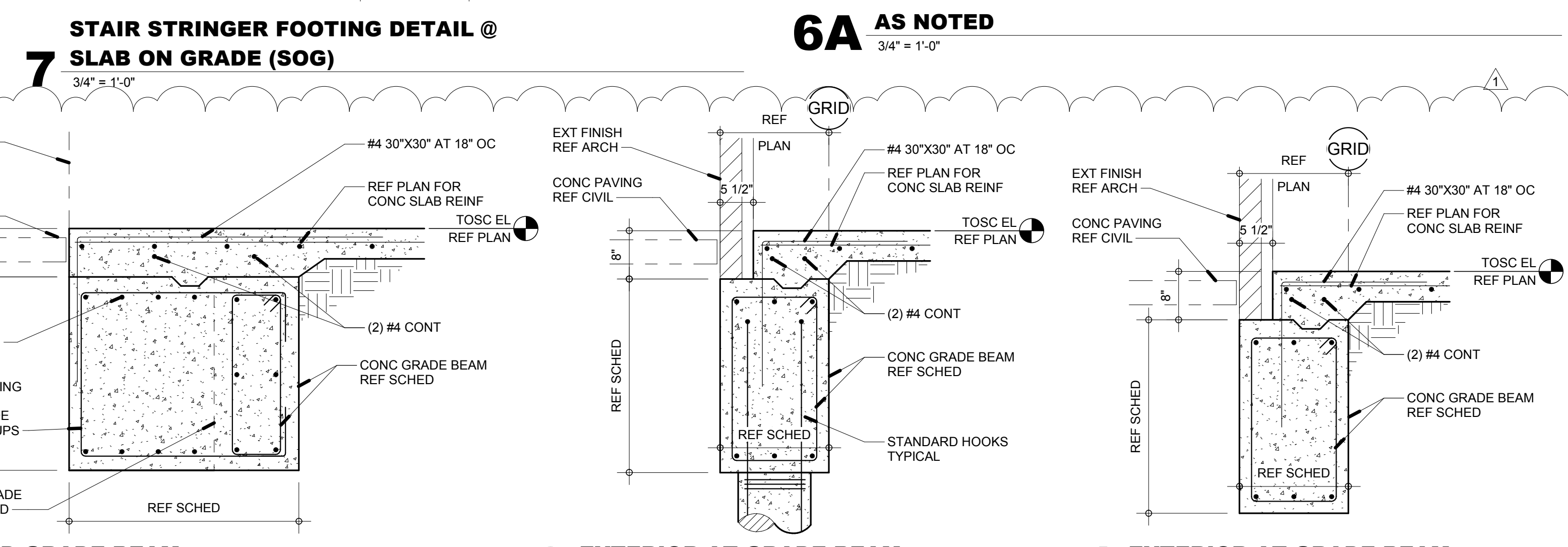
9 JOINT TYPICAL DETAIL
 3/4" = 1'-0"



6 SLAB ON GRADE CONTROL JOINT AROUND STEEL COLUMN
 3/4" = 1'-0"



8 EXTERIOR AT GRADE BEAM
 3/4" = 1'-0"



7 STAIR STRINGER FOOTING DETAIL @ SLAB ON GRADE (SOG)
 3/4" = 1'-0"

5 COLUMN AT PILASTER
 3/4" = 1'-0"

4 GRADE BEAM AT DOOR OPENING
 3/4" = 1'-0"

3 WIDENED GRADE BEAM
 3/4" = 1'-0"

2 EXTERIOR AT GRADE BEAM
 3/4" = 1'-0"

1 EXTERIOR AT GRADE BEAM
 3/4" = 1'-0"

PLOT DATE: 8/26/2019 5:09:25 PM TEMPLATE VERSION: