

DLDEngineering
 18106 FIRST BEND DR.
 CYPRESS, TX, 77433
 O:832.422.9350

ARCHITECT

 W SQUARE ARCHITECTS
 3302 CANAL STREET, SUITE 36
 HOUSTON, TX 77003
 PHONE: (281) 410-1349

DESIGN ARCHITECT
 W SQUARE ARCHITECTS
 3302 CANAL STREET, SUITE 36
 HOUSTON, TX 77003
 PHONE: (281) 410-1349

**GREATER HEIGHTS
 SCHOOL
 HOUSTON, TEXAS**



08/26/2019
**TEXAS REGISTERED
 ENGINEERING FIRM**
 F-17306
 THE INFORMATION DISCLOSED
 HEREIN IS PROPRIETARY
 WITH DLD ENGINEERING LLC.,
 AND SHOULD NOT BE
 USED, DUPLICATED OR
 DISCLOSED WITHOUT ITS
 EXPRESS
 WRITTEN PERMISSION.
 UNAUTHORIZED USE OR COPYING
 OF THIS
 OR ANY CONTENTS HEREOF IS
 STRICTLY FORBIDDEN

PROJECT: 002-1029.19.00
 DRAWN BY: PM
 CHECKED BY: SS
 DRAWING SCALE: AS NOTED

REVISION NO.	DESCRIPTION	DATE
1	ADDENDUM 2	08/26/2019

DATE
08.26.2019

ISSUE
PERMIT SET

BUILDING TITLE
**GH SCHOOL
 4724 N MAIN STREET**

SHEET TITLE
**FOUNDATION
 DETAILS**

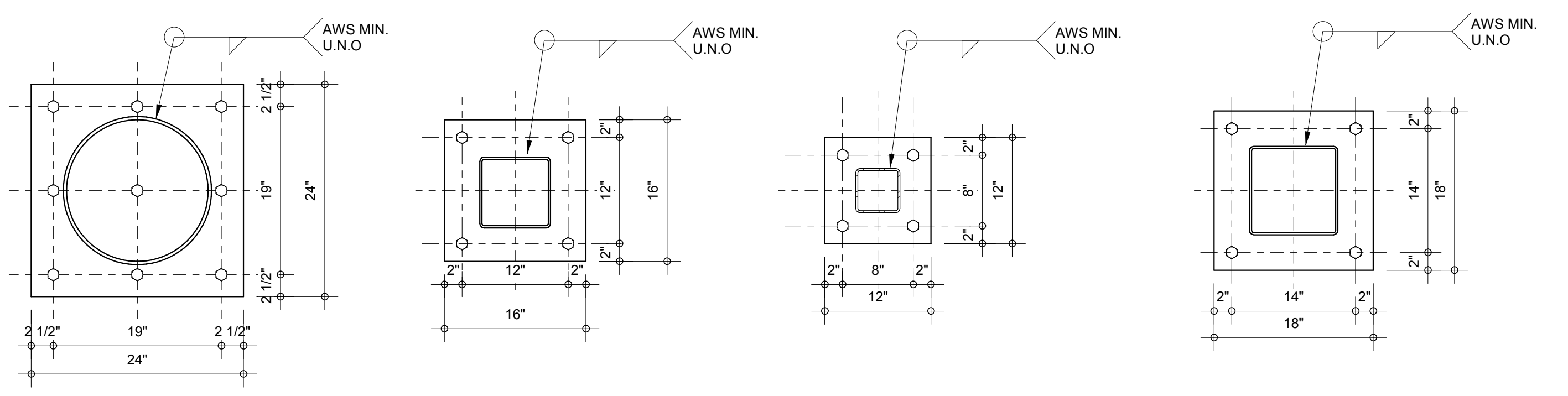
SHEET NO.
S103

PIPE 16" X-STRONG COLUMN W/ BP1
 PLATE 2"X24"X24" W/
 (9) - 1 1/4" DIA X 20" ANCHOR BOLTS

HSS8X8 COLUMN W/ BP2
 PLATE 1 1/4"X16"X16" W/
 (4) - 1 1/4" DIA X 15" ANCHOR BOLTS

HSS5X5 COLUMN W/ BP3
 PLATE 1 1/4"X12"X12" W/
 (4) - 1" DIA X 12" ANCHOR BOLTS

HSS10X10 COLUMN W/ BP4
 PLATE 1 1/4"X18"X18" W/
 (4) - 1 1/4" DIA X 18" ANCHOR BOLTS

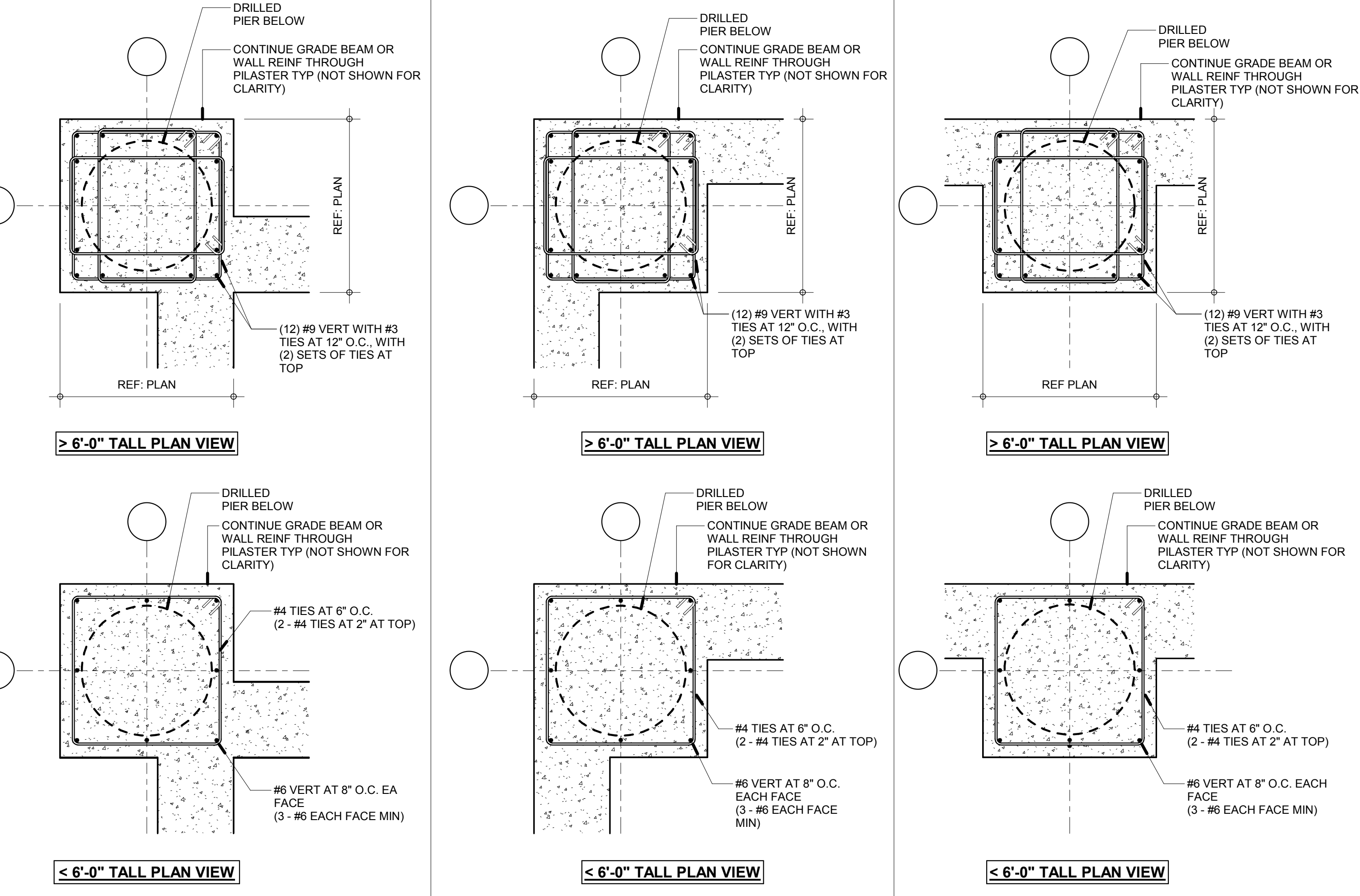


5 STEEL COLUMN AND BASE PLATE DETAIL
 (REF: 4/S302 FOR MORE INFO)
 1" = 1'-0"

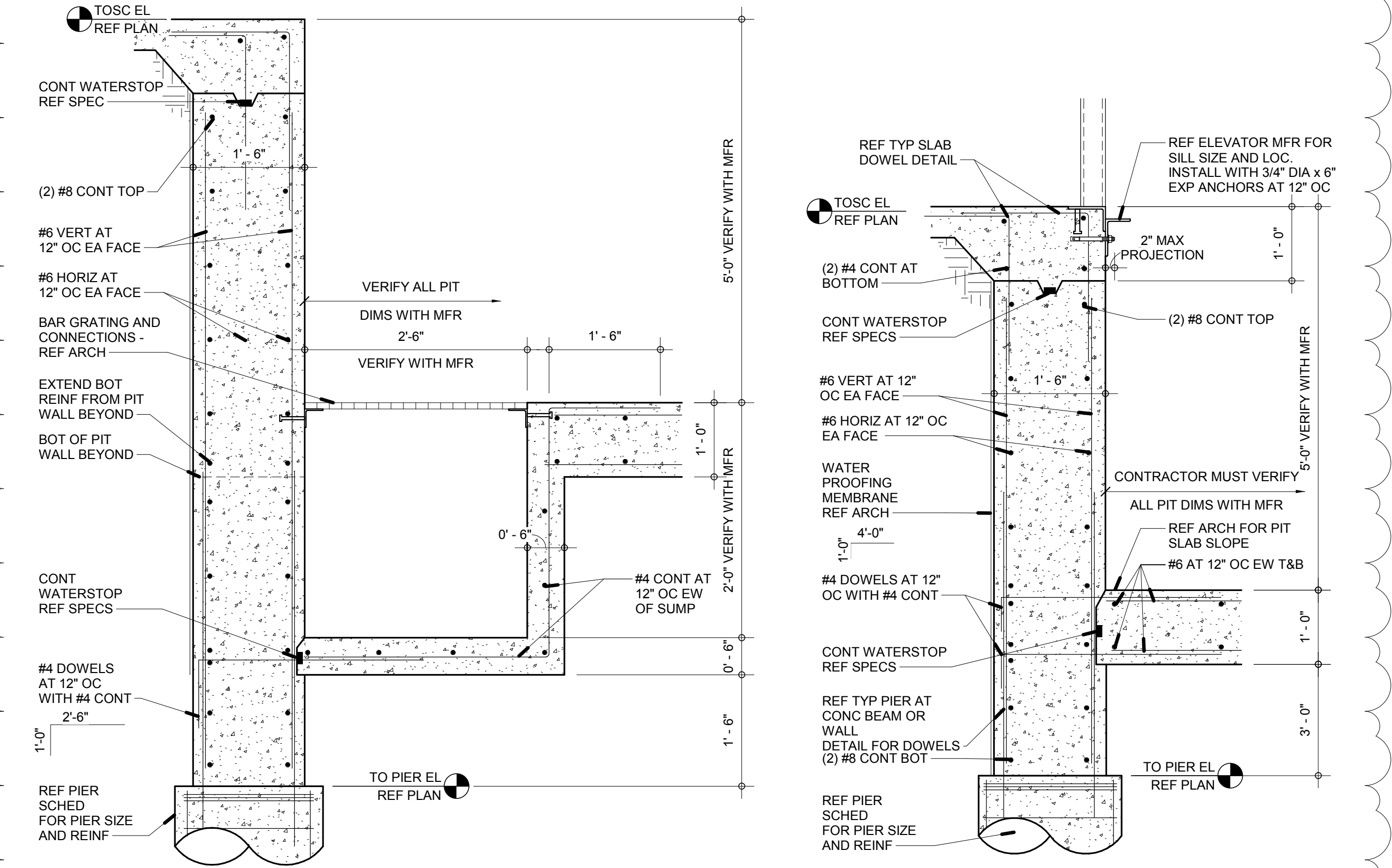
STEEL COLUMN AND BASE PLATE SCHEDULE

COLUMN MARK	COLUMN SIZE	COLUMN PROPERTIES			BASE PLATE MARK	LENGTH (L)	WIDTH (W)	THICKNESS (D)	X	Y	BASE PLATE PROPERTIES			ANCHOR ROD INFO (NUM - DIA. X EMBED)	ANCHOR PROPERTIES		
		ASTM	F _y	F _u							ASTM	F _y	F _u		TYPE	d	F _u
SC1	PIPE 16" X-STRONG	A53, GR. B	35ksi	65ksi	BP1	24"	24"	2"	-	-	A529 Gr.50	50ksi	70ksi	9 - 1 1/4" F1554 Gr.55 X 20"	F1554 Gr.55	1 1/4"	75ksi
SC2	HSS8X8X1/2	A500 Gr. B	46ksi	58ksi	BP2	16"	16"	1 1/4"	-	-	A529 Gr.50	50ksi	70ksi	4 - 1 1/4" F1554 Gr.36 X 15"	F1554 Gr.36	1 1/4"	58ksi
SC3	HSS5X5X3/8	A500 Gr. B	46ksi	58ksi	BP3	12"	12"	3/4"	-	-	A529 Gr.50	50ksi	70ksi	4 - 1" F1554 Gr.36 X 12"	F1554 Gr.36	1"	58ksi
SC4	HSS10X10X1/2	A500 Gr. B	46ksi	58ksi	BP4	18"	18"	1 1/4"	-	-	A529 Gr.50	50ksi	70ksi	4 - 1 1/4" F1554 Gr.36 X 18"	F1554 Gr.36	1 1/4"	58ksi

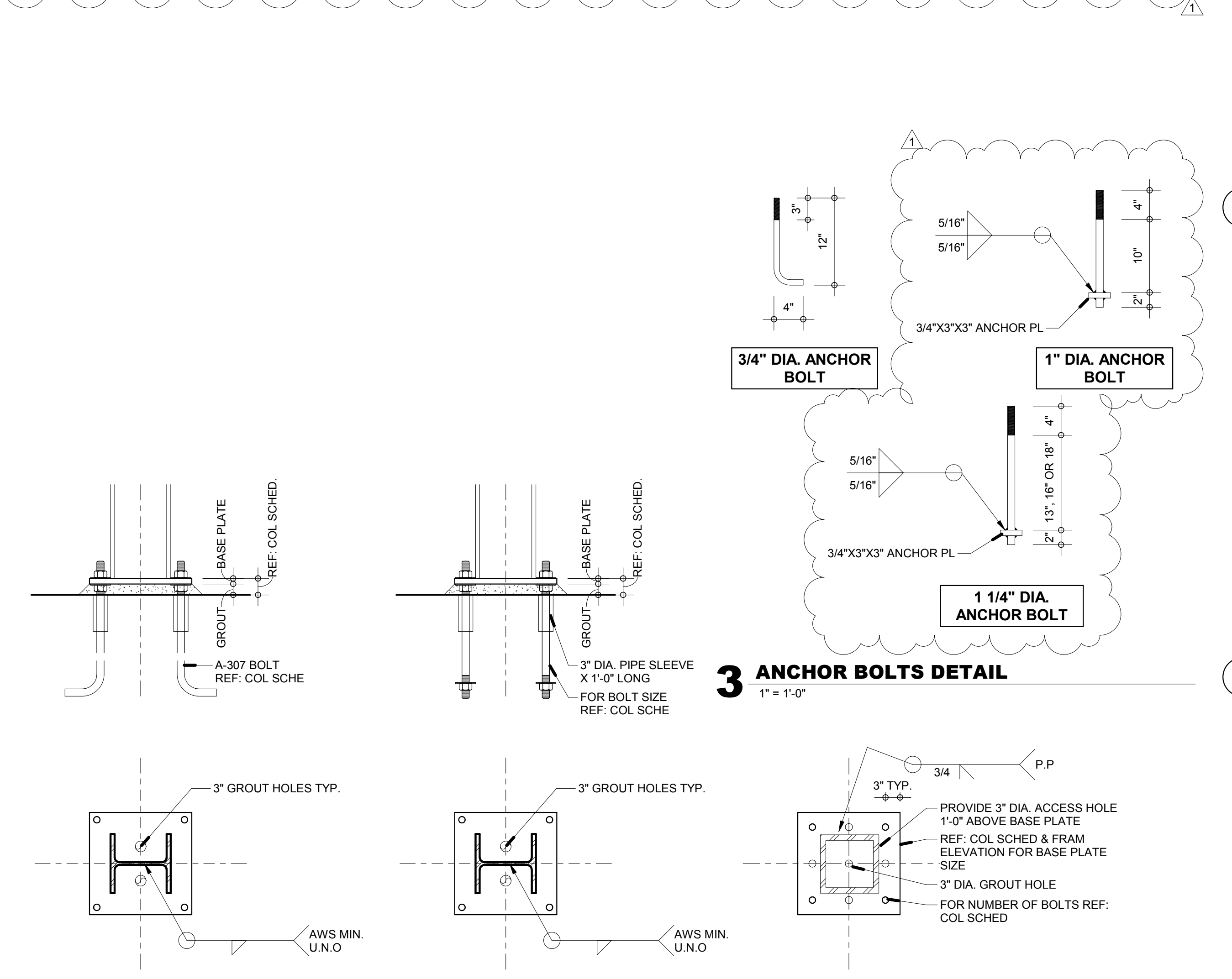
4 STEEL COLUMN, BASE PLATE, AND ANCHOR SCHEDULE
 3/4" = 1'-0"



1 TYPICAL PILASTER DETAILS
 3/4" = 1'-0"



6 ELEVATOR PIT SECTION
 3/4" = 1'-0"



2 TYP. COLUMN BASE PLATE AND ANCHOR BOLT DETAIL
 1" = 1'-0"

7 ELEVATOR PIT SECTION
 3/4" = 1'-0"

PLOT DATE: 8/26/2019 5:09:26 PM
 TEMPLATE VERSION: